



CERTIFICADA  
ISO9001

TECNOLOGIA PARA FLUÍDOS



# MODULAR SWIVEL JOINTS



55 11 2724.8966



vendas@tspro.com.br



www.tspro.com.br

# BENEFITS

All articulations of the TSPRO arms use high performance swivel joints with **DOUBLE SEALING** that provides better operational ergonomics and extreme reduction in the risk of leaks.

Built with a leak detection indicator that signals when the first seal is worn, it prevents leaks and allows scheduled maintenance. There is no need for immediate stoppage of the equipment as the liquid is still retained by the second seal.

ROBUST CONSTRUCTION ALLOWS  
USE OF HIGHER OF LOADS AND  
INCREASED SERVICE LIFE.

## STANDARD MARKET SEALS

SEAL REPLACEMENT INDICATOR



## TURNING MODULES

OUR MODULAR SWIVEL JOINTS ARE DESIGNED TO ALLOW COUNTLESS CONFIGURATIONS OF ASSEMBLIES. IN ADDITION SEALS CAN BE REPLACED WITHOUT THE NEED TO REMOVE THE BALLS. TO ACCESS THE SEALS IT IS ONLY NECESSARY TO LOOSEN THE SCREWS.

## EASY MAINTENANCE AND LOW COST

### ELECTRICALLY CONTINUOUS

ONLY SWIVEL JOINT ON THE MARKET  
DEVELOPED TO ENSURE ELECTRICAL  
CONTINUITY

REQUIRED PATENT Nº BR 10 2018 073470 9



DOUBLE SEAL

# CODIFICATION

JM **20** **A** **T** - **4** **2** **C**

1 2 3 4 5 6

## 1 ASSEMBLY STYLE



STYLE 20



STYLE 30



STYLE 40



STYLE 50



STYLE 60



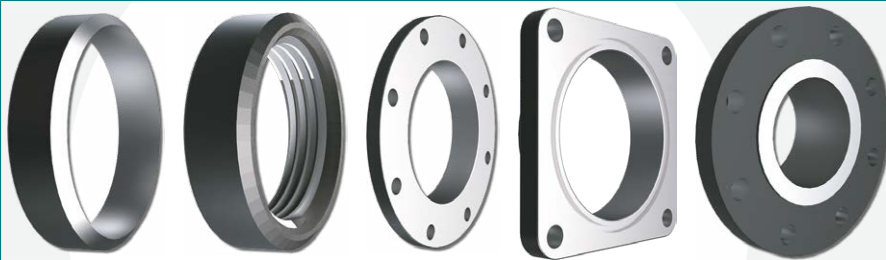
STYLE 70

## 2 FIRST END

## 3 SECOND END

## 4 PIPING DIAMETER

## 5 SEAL



**S** Welding End

**B** BSP SCREW  
**N** NPT SCREW

**T** TTMA Flanged

**Q** Square Flanged Flat Face

**A** ANSI Flanged

**C** Square Flanged With seal groove

2 Inches  
3 Inches  
4 Inches  
6 Inches  
8 Inches  
10 Inches

1 Buna-N (Nitrile)  
2 Viton  
3 PTFE (Teflon)

## 6 MATERIALS

**C** Carbon steel    **4** Stainless steel 304  
**A** Aluminium    **6** Stainless steel 316

## TECHNICAL INFORMATION

- Hydrostatic test at 128 PSI (9Kgf/cm<sup>2</sup>) except on S-type ends.
- Welding performed by Qualified Welders.
- Painting to TSPRO standards in Black on Carbon Steel components.
- Our aluminum curves are cast, with smooth handle available as an option.

## ASSEMBLE AS NEEDED

With the modular swivel joints, there are countless possibilities of assemblies with curves, rotation planes and several end options such as ANSI and TTMA flanges, threads and weld.



**PRODUCTS TSPRO**  
LEARN MORE ABOUT OUR PRODUCTS



**QUOTE NOW!**  
**+55 11 2724.8966**



FOLLOW US



VISIT OUR WEBSITE  
[www.tspro.com.br](http://www.tspro.com.br)

IMP.00011 - REV 01

\*Illustrative Images

