

TECNOLOGIA PARA FLUÍDOS

TSPRO CHECK VALVE 4" TTMA API1004 FLANGED

When used in bottom loading arms, it has the function of an anti-theft device and aids in the maintenance of the api coupler, as it does not allow the drainage of product contained in the vertical section of the loading arm.



AIDS IN MAINTENANCE OF THE API COUPLER IN BOTTOM LOADING ARMS.

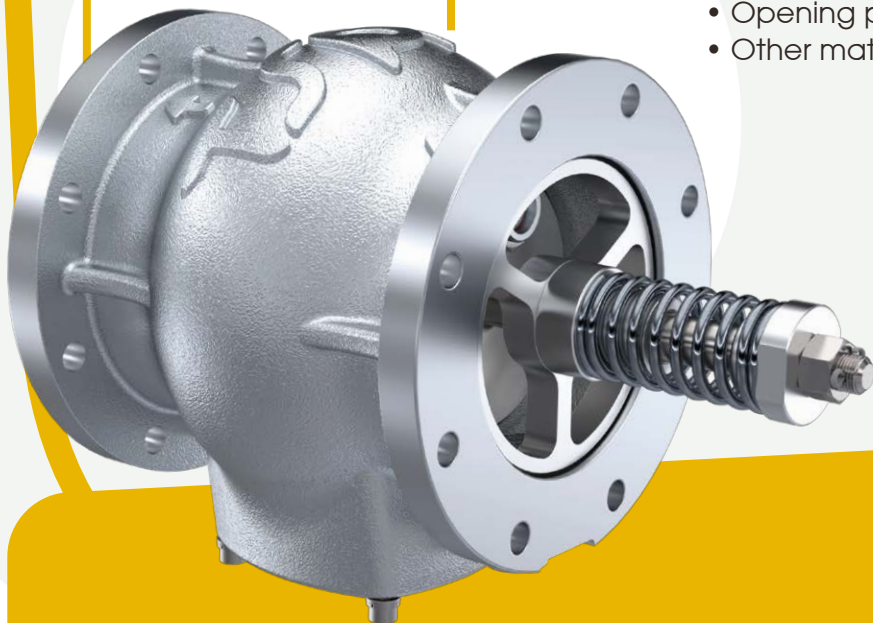
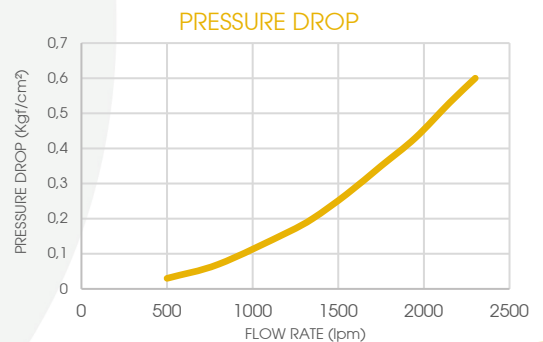
It can be used in TOP LOADING Arms that do not have a "Deadman" quick-closing valve. This provides closure of the pipe avoiding evaporation and the splashing of products.



THE API CHECK VALVE HAS AN ANTI-THEFT FUNCTION WHICH PREVENTS THE DRAINAGE OF THE ARM'S VERTICAL SECTION

TECHNICAL INFORMATION

- Construction materials: Body made of Aluminum and Internal Components in Stainless Steel
- Seals of Viton A
- Hydrostatic test at 128 psi (9kgf/cm²)
- Opening pressure 0.3 bar
- Other materials and pressures available on request



55 11 2724.8966



vendas@tspro.com.br



www.tspro.com.br

PRODUCTS TSPRO

LEARN MORE ABOUT OUR PRODUCTS



LOADING
ARMS



SWIVEL
JOINTS



INDUSTRIAL
HOSES



VAPOR RECOVERY
COVERS

LEARN HOW TO SOLVE AND PREVENT
THE MAIN CAUSES OF OVERFLOW AND END FUEL CONTAMINATION.



ATC[®] SAFETY DEVICE

ANTI OVERFLOW AND CONTAMINATION
of fuels in BOTTOM LOADING Tank Trucks

THE ONLY PREVENTION SOLUTION FOR CONTAMINATION IN BOTTOM LOADING ARMS OF THE WORLD

QUOTE NOW!
+55 11 2724.8966



FOLLOW US



VISIT OUR WEBSITE
www.tspro.com.br

IMP.00004 - REV 02

*Illustrative Images

